

# Key Fob/Key Chain Instructions – Part 1

## Materials:

- Fabric – 4½” by 9”
- Medium-weight Fusible Interfacing – 4½ ” by 8”
- Thread to match the fabric
- Rotary cutter
- Thread snips
- Cutting mat
- Quilting ruler
- Scissors
- Iron

## Instructions:

1. Cut a piece of fabric measuring 4½” by 9” using your rotary cutter. Cut a piece of interfacing measures 4½” by 8” using your rotary cutter. The interfacing is shorter to decrease the bulk when sewing the ends together.



## Key Fob/Key Chain Instructions – Part 1

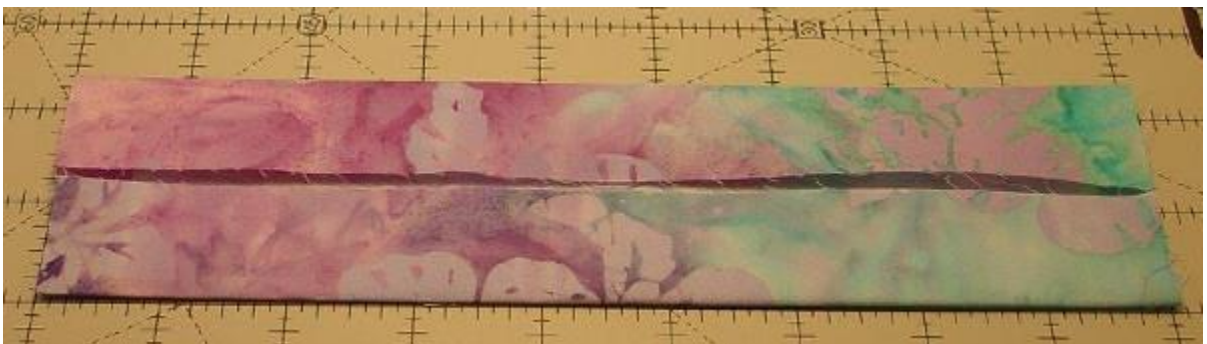
2. Fuse the interfacing onto the fabric leaving a half inch ( $\frac{1}{2}$ " ) of fabric exposed on each end.



3. Press the fabric in half the long way. Your ironed piece will measure  $2\frac{1}{4}$ " by 9".



4. Open the ironed piece and fold each long side so they meet in the center and iron.



## Key Fob/Key Chain Instructions – Part 1

5. Fold in half on the long side along the original pressing line from Step 4. Press again. You will have a strip that is  $1\frac{1}{8}$ " wide and no raw edges will be visible on the long (9") sides of the piece.

Picture 5



6. Stitch  $\frac{1}{8}$ " along both long edges. Trim any threads.



### **Alternate Construction Method (replaces Steps 1 and 2):**

Cut a  $4\frac{1}{2}$ " strip the width of your fabric. Fuse a  $4\frac{1}{2}$ " piece of interfacing on the fabric strip. Cut into 9" pieces.

### **Optional Embellishment:**

Add decorative stitching to your strip. This can be done between Step 5 and Step 6 or after Step 7 depending upon the decoration selected.

## Key Fob/Key Chain Instructions – Part 2

### Materials:

1" D-Ring

1 $\frac{1}{8}$ " by 9" prepared piece of fabric from the Part 1 instructions.

Thread to match the prepared strip

Thread snips

### Instructions:

1. Decide which fabric you want on the outside, hereinafter called: right side.
2. Fold the stitched strip in half with the right sides together matching the raw edges. Make sure the strip isn't twisted. The folded piece will measure 4 $\frac{1}{2}$ " by 1 $\frac{1}{8}$ ".



3. Slide the D-ring onto the strip. With edges matched, stitch forward and reverse several times approximately  $\frac{1}{2}$ " from the ends ( $\frac{1}{2}$ " seam allowance).



## Key Fob/Key Chain Instructions – Part 2

4. Clip the ends  $\frac{1}{8}$ " from the stitching.

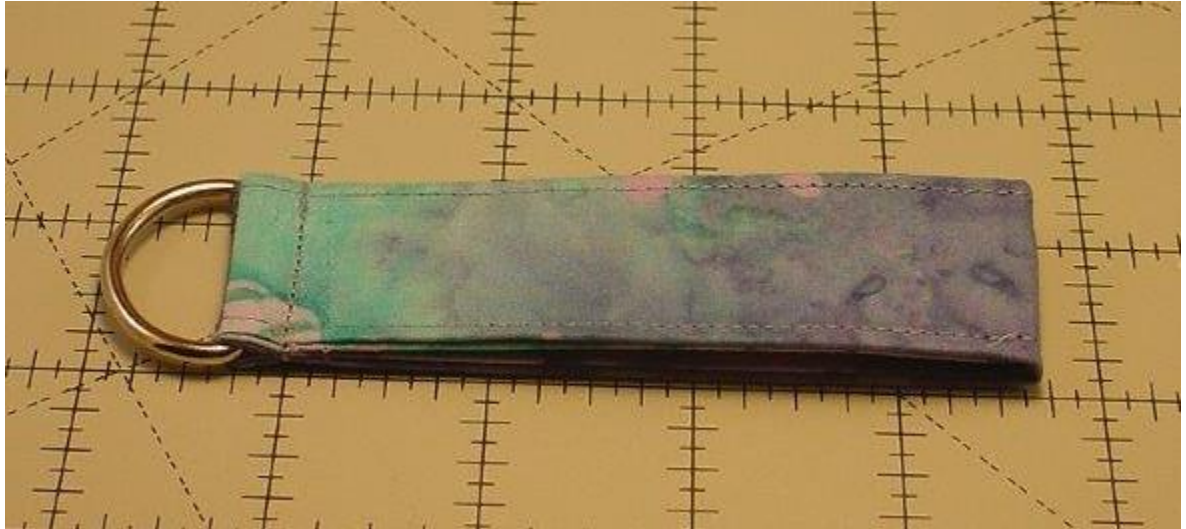


5. Flip the strip right side out. The seam will be on the inside. Pull the D-ring up to the end that was stitched together.



## Key Fob/Key Chain Instructions – Part 2

6. Stitch as close to the D-ring as possible using the same forward and reverse stitching. Using a zipper foot will make it easier to get close to the D-ring.



7. Trim any dangling threads with thread snips and your key fob is finished!